

*H*

H A B E R S H A M  
P L A N T A T I O N

1873

*Savannah, Georgia*

- A DEVELOPMENT OF GENESIS REAL ESTATE GROUP, LLC -

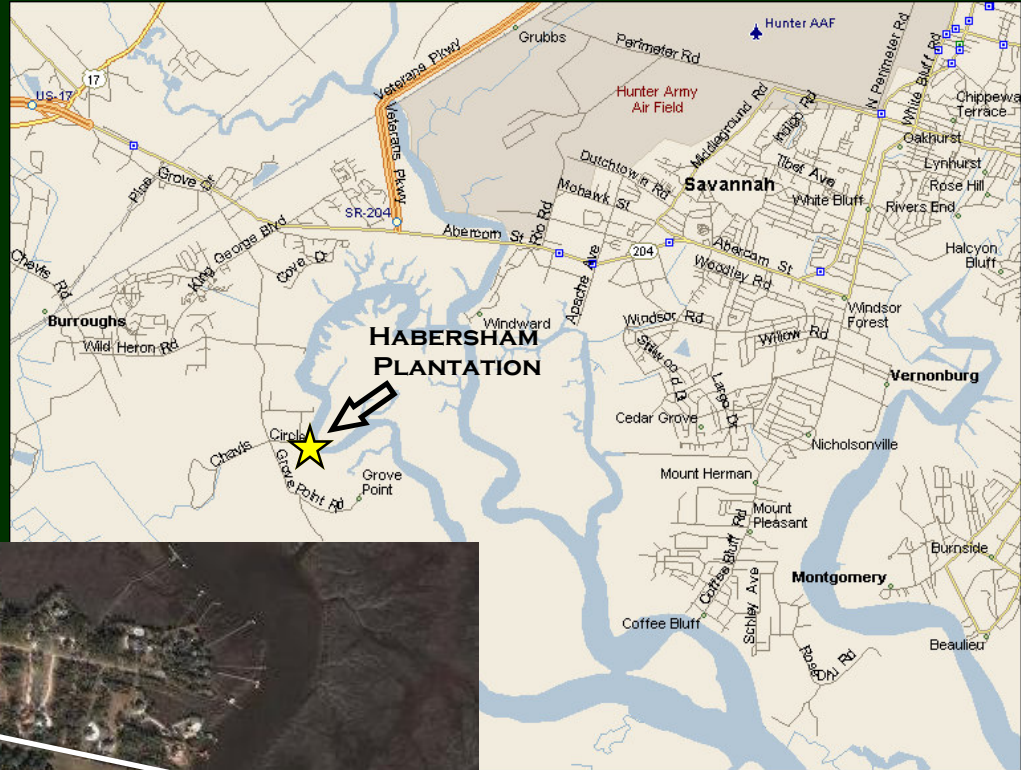


*An exclusive, water-front residential community featuring 54 lots on the Grove Point Road just south of Savannah. Habersham Plantation offers a rare opportunity for a very limited number of residents to capture the ambience of traditional "low country" living on 1.5 to 4.9 acre lots with carefully designed architectural guidelines and a community boat ramp on the Grove River along with a river house, tennis courts and walking trails.*

  
GENESIS  
*Real Estate Group, LLC*

 GILBERT REALTY  
COMPANY, LLC.

*Habersham Plantation is located within 20 minutes of Savannah's Downtown and Southside with immediate access to SR 204, the Veterans Parkway, US 17 South and Interstate 95. Savannah / Hilton Head International Airport is also within twenty minutes.*



*For additional information or to schedule a tour of Habersham Plantation, contact Gilbert Realty Company, LLC at (912) 236-8992 or [www.gilbertrealtyco.com](http://www.gilbertrealtyco.com).*

**THOMAS & HUTTON  
ENGINEERING CO.  
SAVANNAH, GEORGIA**

  
**GENESIS**  
*Real Estate Group, LLC*

 **GILBERT REALTY  
COMPANY, LLC.**

**NOTE: THE SPECIFICS OF THE PROPOSED COMMUNITY AND AMENITY PACKAGE ARE BASED UPON CURRENT DEVELOPMENT PLANS AND ARE SUBJECT TO CHANGE WITHOUT NOTICE.**