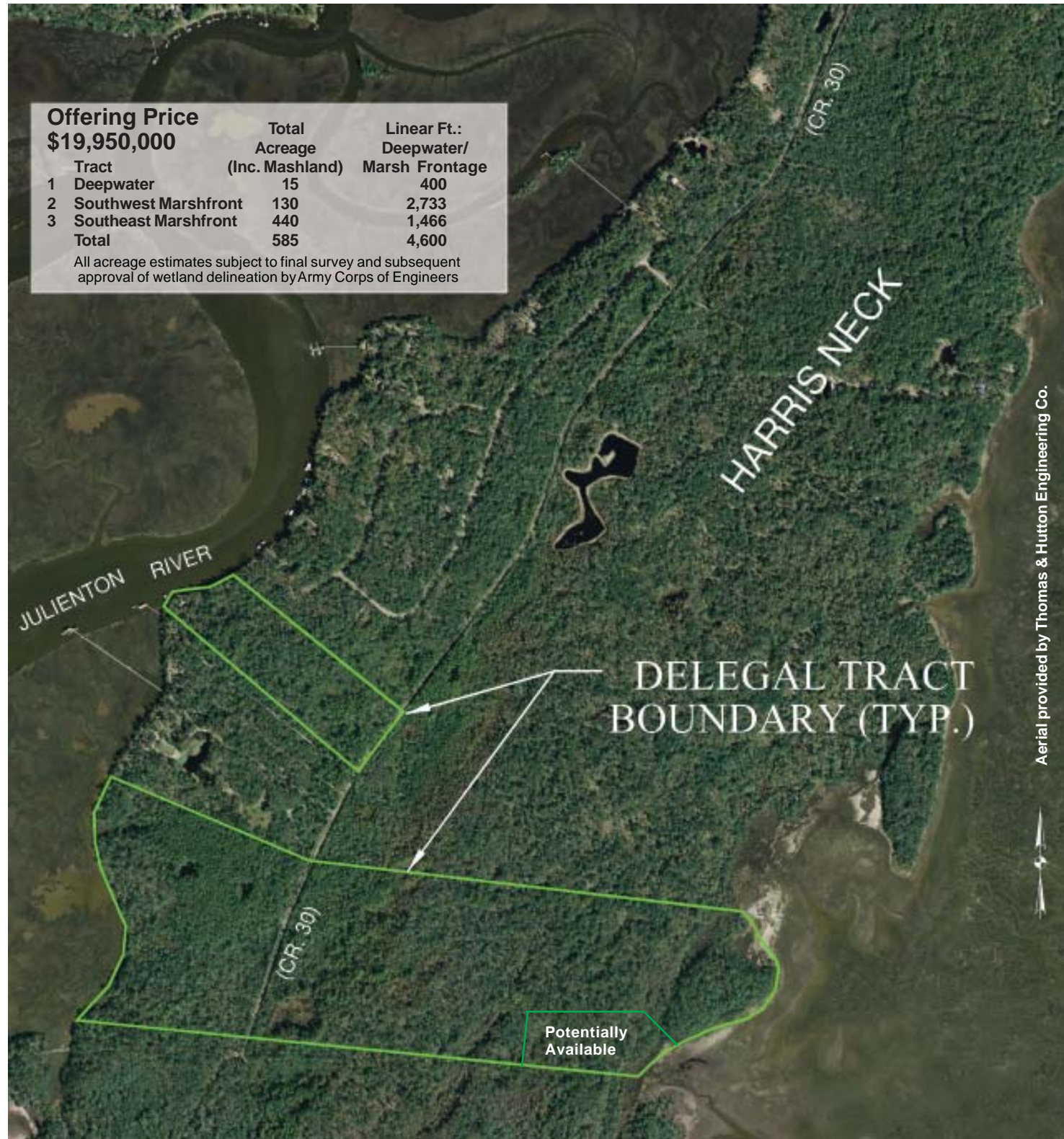


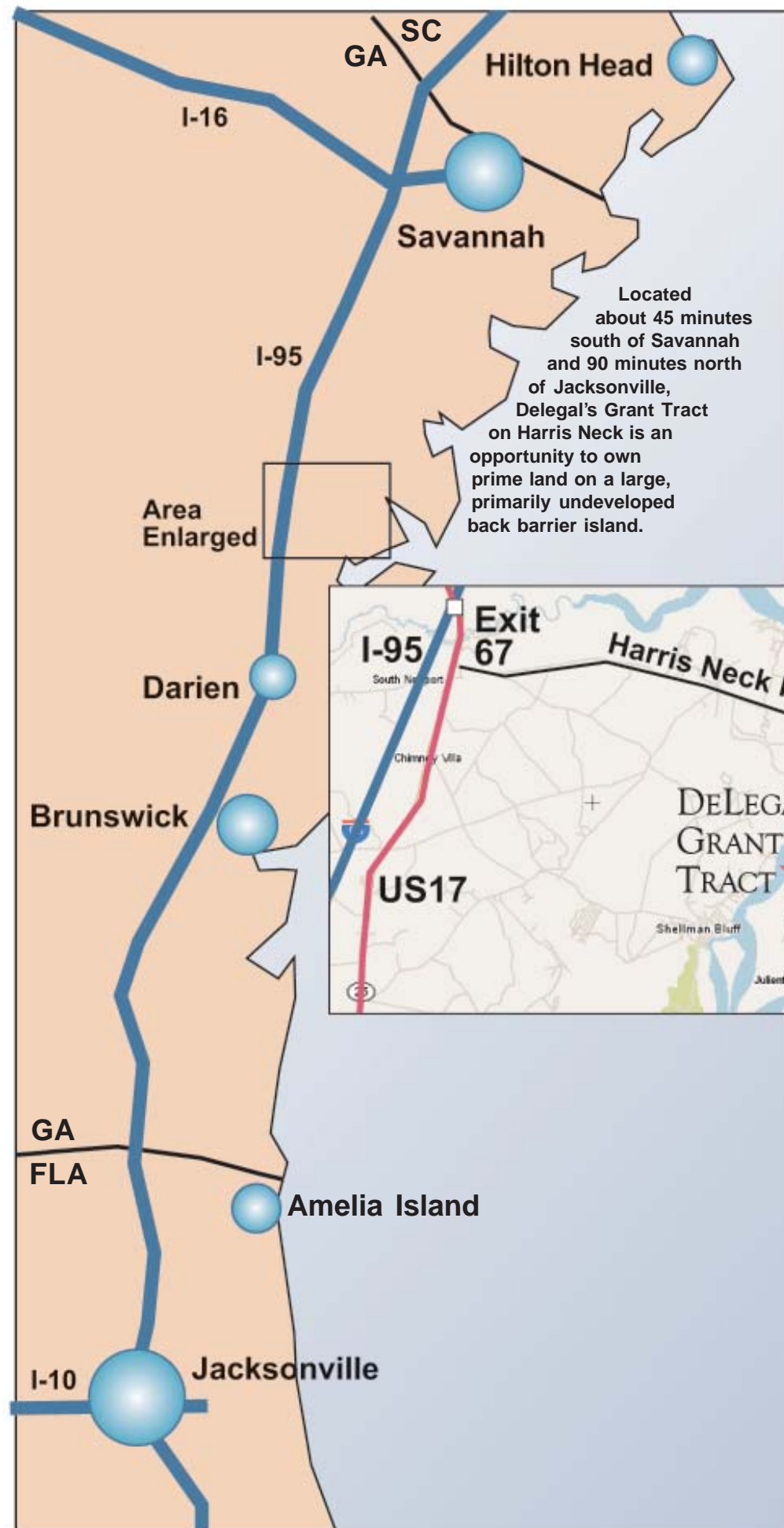
DELEGAL'S GRANT TRACT



DEEPWATER TRACT ON HARRIS NECK IN MCINTOSH COUNTY, GEORGIA



HARVEY J. GILBERT
 Gilbert Realty Company, LLC
 104 West State Street • Suite 220
 Savannah, Georgia 31401
 (912) 236-8992 • www.gilbertrealtyco.com



DELEGAL'S GRANT TRACT

Located on Harris Neck in McIntosh County, Georgia, Delegal's Grant represents one of the few remaining development parcels available on the Georgia Coast with immediate deepwater access to Sapelo Sound and the Atlantic Ocean. Surrounded by beautiful marshlands and maritime forests, this is the perfect property for recreational enjoyment or high-end development.

Delegal's Grant comprises three tracts that can be purchased as a whole, in order to create an ideal development opportunity, or as separate tracts for development of family or corporate retreats. Harris Neck is centrally located along Georgia's coast and minutes away from convenient I-95 access to Savannah to the north or burgeoning Jacksonville to the south. The area

is a natural wonderland at the end of a picturesque road through seemingly infinite marsh vistas interspersed with uplands featuring centuries-old live oaks.

McIntosh County, named for one of the clans of Scottish Highlanders brought to these shores to defend the British colonies from the Spanish settlements to the south,

is rich in history. The Delegal's Grant property was originally part of a King's Grant to Lieutenant Philip Delegal, who was stationed at Fort Frederica on St. Simons at the time of the British victory at the Battle of Bloody Marsh, which effectively ended Spanish influence along Georgia's coast.

Darien, the seat of McIntosh County, was for a time among the busiest seaports in America. The Altamaha River, one of world's last great remaining undammed rivers (its distinctive curve is part of 17 county boundaries and has been described as "the most recognizable geographic feature on the east coast"), served as a highway for timbermen working upriver who floated down great rafts of cypress and longleaf pine to feed the timber mills of the world. Though much of the area was extensively timbered, excursions up the Altamaha still reach aged cypresses and expanses of wilderness that give a sense of the primordial splendor that greeted the arriving colonists.



GEN^L JAS. EDW. OGLETHORPE
FOUNDER OF THE
GEORGIA COLONY
VISITS THE
HIGHLANDER VILLAGE
ESTABLISHED TO PUT
THE FIGHTING SCOTS
BETWEEN THE
COLONY AND THE SPANISH

